


**Tackling child labour in cocoa
through a due diligence
approach: how can an EU legal
framework scale-up positive
impact?**

8 June 2021

AGENDA

- 
- 14:00 Welcome**
Bart Vandewaetere, VP Corporate Communications & ESG Engagement, Nestlé EMENA
 - 14:05 The Child Labour Monitoring and Remediation System**
Sarah Dekkiche, Director of Policy & Partnerships, International Cocoa Initiative
 - 14:15 Nestlé's actions to address child labour and related challenges**
Darrell High, Head of Nestlé Cocoa Plan
 - 14:25 Enhancing collaboration to promote systemic change**
Barbara Wettstein, Public Affairs Manager, Nestlé
 - 14:35 Reactive statement**
Prof. Dorothee Baumann-Pauly, Director, Geneva Center for Business and Human Rights
 - 14:40 Moderated Q&A and concluding remarks**

ICI'S CHILD LABOUR MONITORING AND REMEDIATION SYSTEM

Tackling child labour in cocoa through a
due diligence approach

Sarah Dekkiche, Director of Policy &
Partnerships, International Cocoa Initiative

June 8th 2021



International
COCOA
Initiative





ABOUT ICI



International **COCOA** Initiative

About ICI:

A non-profit Foundation and multi-stakeholder initiative, uniting civil society and the cocoa and chocolate industry, and working with governments to address child labour and forced labour in the cocoa sector

Industry members:



+ 1 individual farmer rep

Non-industry members:



Board advisors:





CHILD LABOUR IN CONTEXT



According to the ILO, child labour is:

“ WORK THAT DEPRIVES CHILDREN OF THEIR CHILDHOOD, THEIR POTENTIAL AND THEIR DIGNITY, AND THAT IS HARMFUL TO PHYSICAL AND MENTAL DEVELOPMENT. ”



Not all work done by children is child labour

CHILD LABOUR (ILO Convention No. 138)

- Underage, unsupervised work
- Excessive hours of work, deprived of schooling

WORST FORMS OF CHILD LABOUR (ILO Convention No. 182)

- Conditional: hazardous activities (age/context)
- Unconditional: sexual exploitation, abuse, bonded labour, forced child labour and trafficking.

ACCEPTABLE CHILD WORK

- Above minimum working age
- Non-hazardous, light tasks, limited hours
- Does not interfere with schooling

CONTEXT - Child labour in cocoa in Côte d'Ivoire and Ghana

108m

children in child
labour in agriculture
worldwide

1.56m

children in *child
labour* in cocoa in
Côte d'Ivoire (790k)
& Ghana (770k)

1.48m

children in *hazardous
child labour* in cocoa in
Côte d'Ivoire (765k)
& Ghana (713k)

CONTEXT -

Cocoa-related child labour in Côte d'Ivoire and Ghana



99%

of child-labourers in cocoa-growing areas live at home with parents



45%

of children in cocoa-growing areas do some form of cocoa-related child labour



88-96%

of child labourers attend school
[88% in Côte d'Ivoire;
96% in Ghana]



8.3h

Average hours worked per week by child labourers in cocoa

CONTEXT -

Children doing hazardous work in cocoa



80%

of child labourers
used sharp tools



64%

of child labourers
carried heavy loads



54%

of child labourers
were exposed
to agrochemicals



35%

of children in *hazardous
child labour* suffered
wounds or cuts
(vs. 8% of children doing
non-hazardous work)

ROOT CAUSES

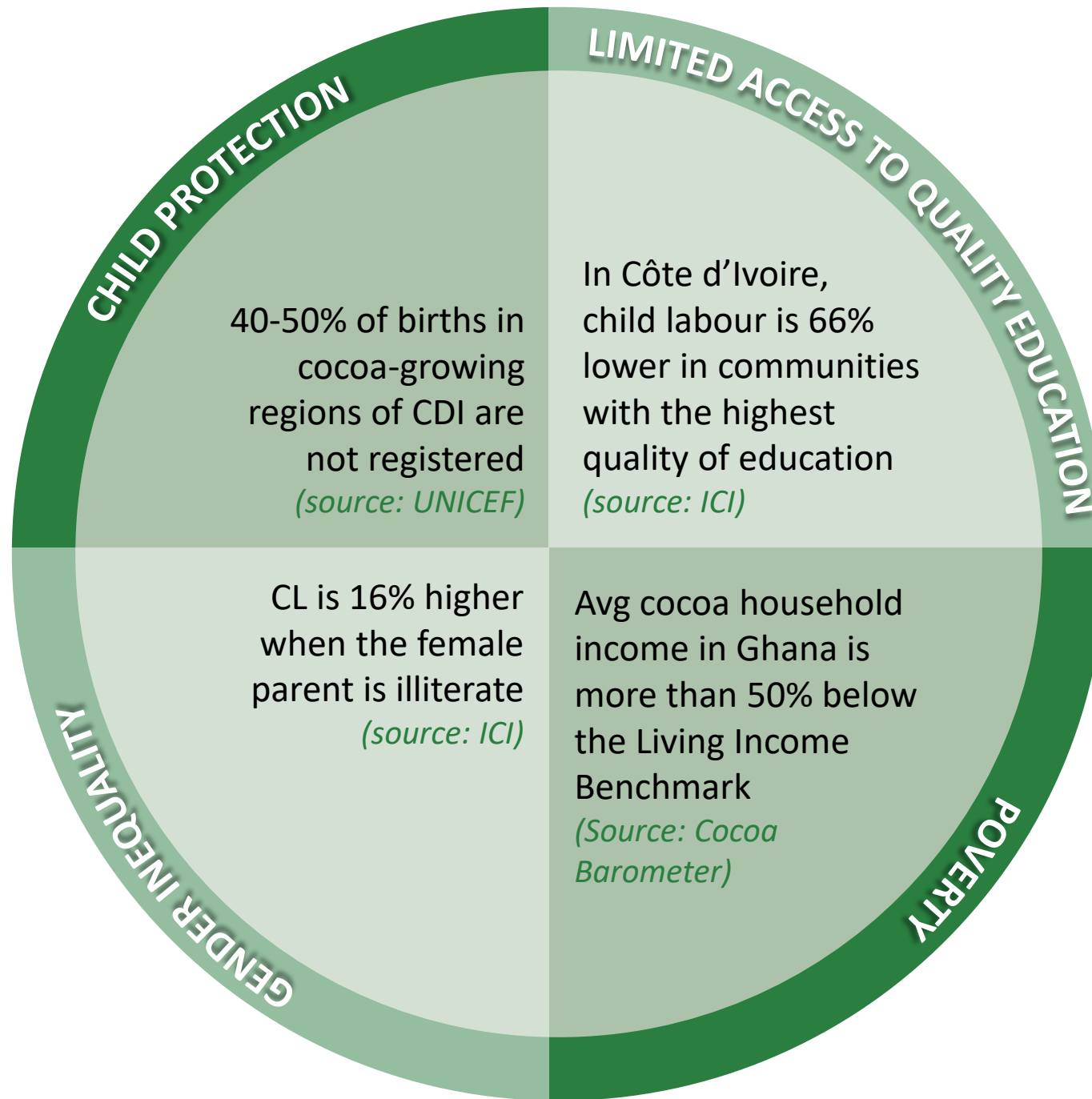
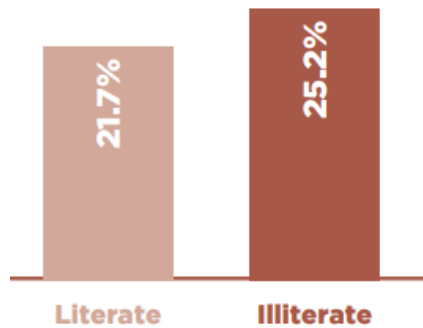
of child labour:

Unregistered births:

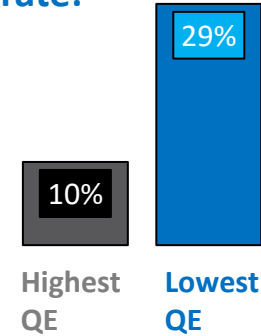


40-50%

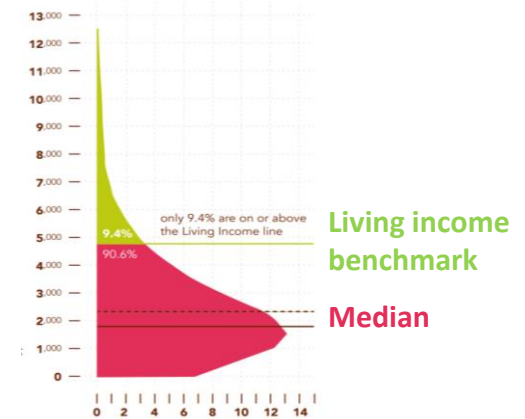
Child labour rate by literacy of female parent:



Average child labour rate:



Income distribution of cocoa farmers:



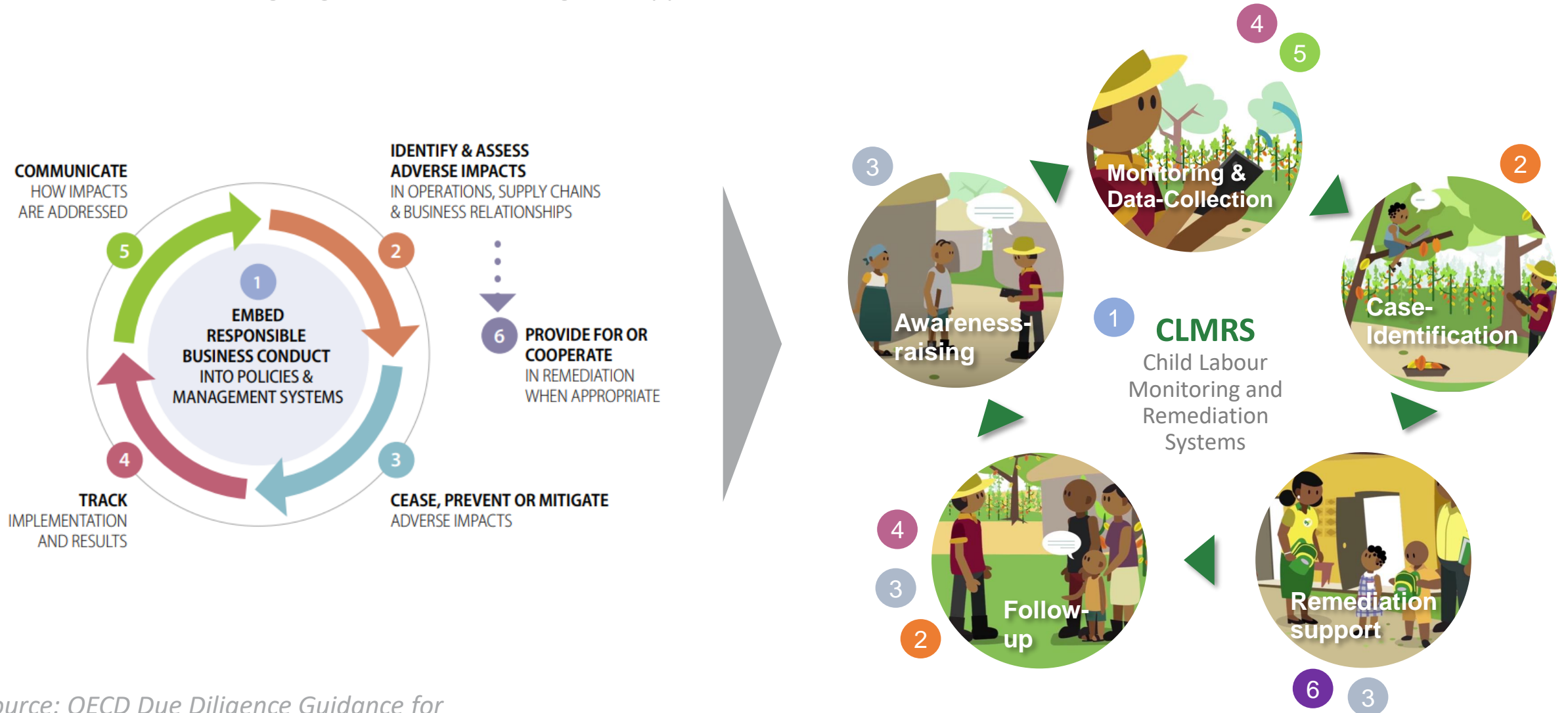


CHILD LABOUR MONITORING & REMEDICATION SYSTEMS



CLMRS as a tool for Responsible Business Conduct

CLMRS enables an ongoing risk-based due diligence approach in line with the OECD Guidance



THANKS!



International
COCOA
Initiative





International COCOA Initiative

ICI Secretariat Switzerland
Chemin de Balxert 9
1219 Châtelaine - Switzerland
+41 22 341 47 25

ICI National Office Côte d'Ivoire
Il Plateaux, 6ème Tranche, Ilot 215,
Lot 2518, Abidjan - Côte d'Ivoire
+225 22 41 09 14

ICI National Office Ghana
House #5 Mensah Wood Street,
East-Legon - Accra - Ghana
+233 302 998 870

www.cocoainitiative.org
info@cocoainitiative.org



Nestlé's actions to address child labour and related challenges

Darrell High, Head of Nestlé Cocoa Plan

The Nestlé Cocoa Plan - A holistic approach

OUR VISION = Building a brighter future for cocoa farmers, producing great quality cocoa
Better Farming, Better Lives, Better Cocoa, Every day = OUR MISSION

BETTER FARMING

Enabling farmers to run profitable farms by:

- **Farmer training** to improve farming practices
- **Better quality plants to improve yield and disease resistance**
- Respecting the environment to **avoid deforestation**



BETTER LIVES

Improving social conditions by:

- **Tackling child labour** through transparency and monitoring to help elimination
- Promoting **gender equality to improve household revenues**
- **Improving water and sanitation** provision



BETTER COCOA

Sustainable good quality cocoa by:

- Building **long term loyal customer - farmer Group relationships**
- **Supply chain traceability** to the farmer
- Rewarding NCP farmers for certification and **good quality.**



Collaboration, Transparency and Public Reporting

Working with WCF, CocoaAction, independent partners e.g. Fair Labor Association, ICI, Rainforest Alliance, IDH, GIZ, local NGO's and research organisations



At scale, the Nestlé CLMRS is effective in identifying, reducing and preventing children doing hazardous work

78,124

children aged 5-17 currently being monitored

19%

of monitored children participating in child labour

133,545

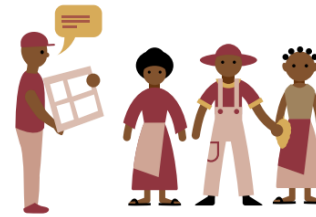
children have been helped since 2012

32%

children out of child labour after two follow-up visits in 2020

Examples of help (prevention & remediation) activities (2012-2020):

Community level



593,925

attendees to community awareness-raising sessions

Household level



979

women taught basic literacy and numeracy

Individual level



6,321

birth certificates issued



53

schools built or refurbished



4,909

adults taught alternative income-generating activities



37,501

school kits delivered



Each child's situation is different and some cases are harder to solve.

Learnings and future outlook

- Implementing a robust CLMRS requires **investment and time, building trust** with local communities.
- CLMRS is **a** tool which helps us understand the situation and what works to help the children
- **Collaboration on the ground** with farmer cooperatives, communities and authorities is key for success.
- CLMRS must be part of a **broader strategy to address the causes** of child labour and other issues.

What are our next steps?

- Continue to evolve and develop CLMRS as a tool to help protect children
- Source **100%** of the cocoa we use through the Nestlé Cocoa Plan by 2025.
- Focus on activities to **improve farmer livelihoods** and **reduce child labor risks**.

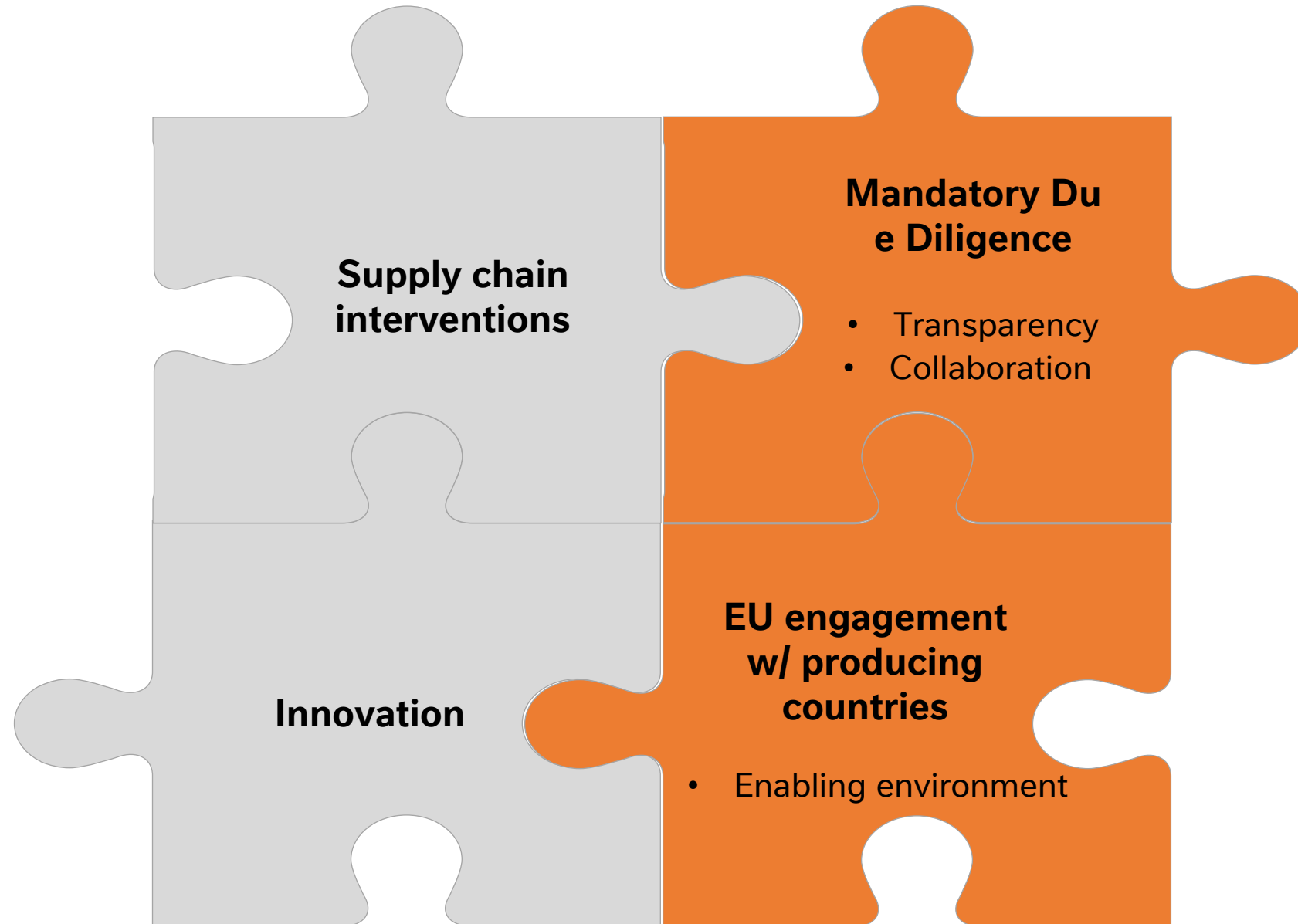




Enhancing collaboration to promote systemic change

Barbara Wettstein, Public Affairs Manager
Responsible Sourcing, Nestlé

A “smart mix” of measures is needed to drive impact at scale



EU mandatory due diligence legislation will help scale up impact

Four key features of an appropriate and proportionate EU legislation:

**Alignment with the
UN Guiding Principles
on Business and
Human Rights**



**Ensure robust due diligence
processes that are fully
embedded in company
governance and culture**

**Harmonization at
EU level**



**Legal certainty for
businesses & ability to
focus on concrete
actions on the ground**

**Including all
business actors
(public/private)**



**Create a level playing
field & incentivize
collaboration along
supply chains**

**Appropriate and
proportionate
sanctions**



**Incentivize transparency
and avoid
disengagement from
risky sourcing**

Reactive statement by

**Prof. Dorothee Baumann-
Pauly**

**Director, Geneva Center for
Business & Human Rights**



GENEVA CENTER
FOR **BUSINESS**
& **HUMAN**
RIGHTS



Questions & Answers